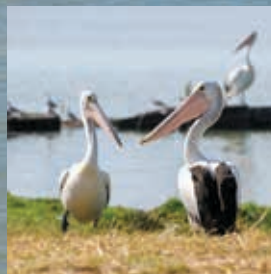
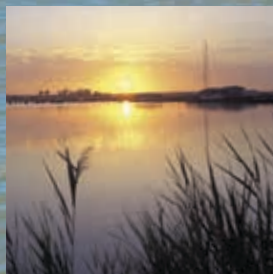


# PS Murray Princess

Murray River Cruising  
South Australia

Cruises and Holiday Packages 2017/18



**CAPTAIN COOK**  
**CRUISES**

# Relax, Discover, Enjoy.

Pulling away from Mannum you can feel the stresses of everyday life simply wash away. Cities and traffic give way to the soothing calmness of the river as it flows gently towards the sea.

Like a wildlife refuge, there are birds of all shapes and sizes. Pelicans glide effortlessly across the water, while spoonbills peer down from the treetops, and parrots chatter excitedly as they skip from branch to branch.

A cruise along the Murray recalls a distant age of riverboat trade, when goods and passengers moved between busy ports. Step further back in time on a guided nature walk, exploring ancient forests and wetlands where Aboriginal people once dined on shellfish and carved canoes from the eucalypts.

The view from the sundeck is magnificent, particularly in the late afternoon when the setting sun turns the towering cliffs a fiery orange. With a coffee, cool drink or glass of the local drop in hand, gaze out across billabongs, woodlands and pastures.

Each night a different part of the river becomes home, as the Murray Princess finds quiet moorage in plenty of time for dinner, an evening chat with your fellow passengers and a peaceful night's sleep.

There's no better way to experience the tranquillity and timelessness of Australia's mightiest river than aboard the paddlewheeler, PS Murray Princess.

*Introduction by John Pedler,  
Editorial and Video Content Specialist, RAA Group*



# Contents

About the PS Murray Princess	4-5
Joining your Cruise	6
Compare our Cruises	7
3 Night Discovery Cruise	8
4 Night Outback Heritage Cruise	9
7 Night Murraylands and Wildlife Cruise	10
7 Night Upper Murraylands Cruise	11
Optional Onshore Tours	12
Special Event Cruises and Group Charters	13
Pre or Post Cruise Accommodation and Touring	14
Adelaide, Kangaroo Island and Murray River Packages	15
Terms and Conditions	Back Cover



# About the PS Murray Princess

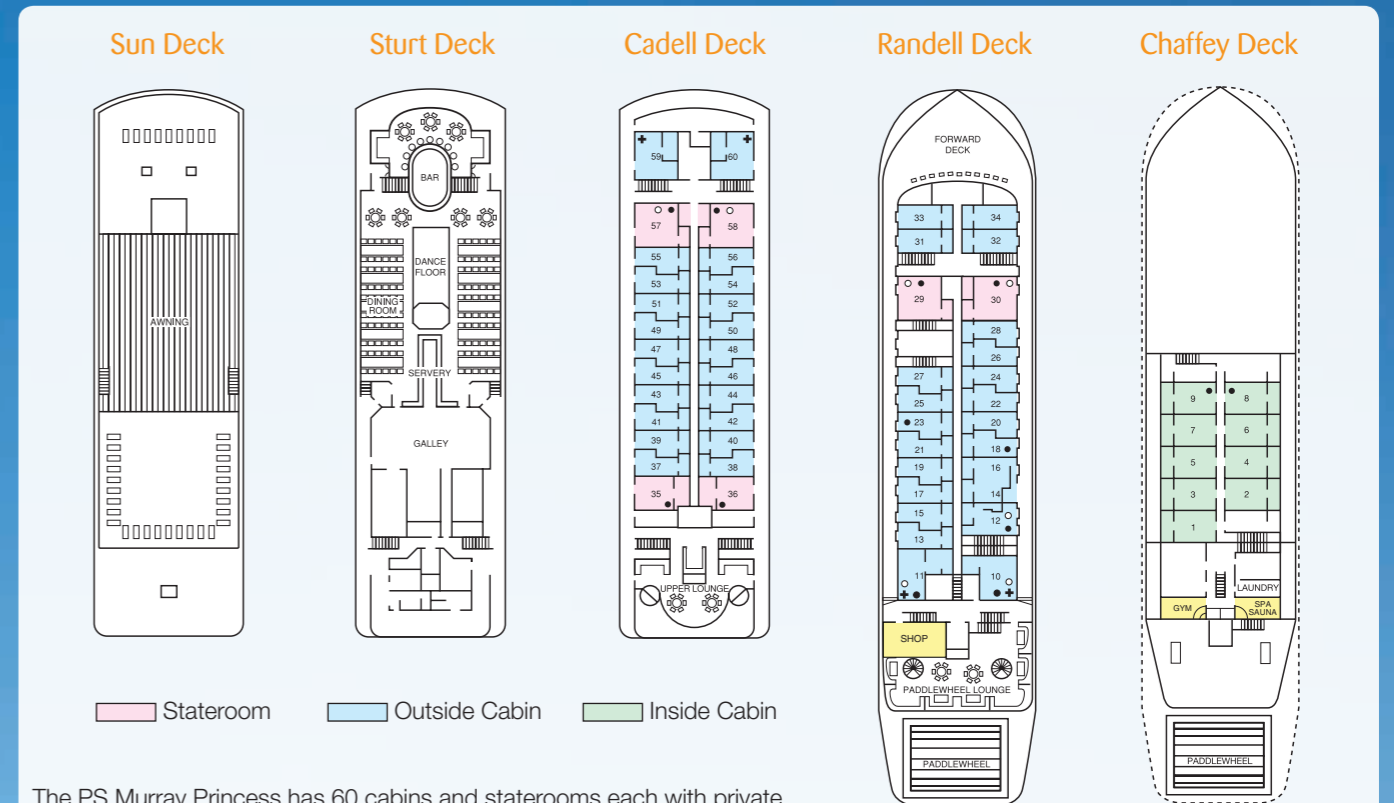
With a character and charm of yesteryear, the PS Murray Princess is an authentic paddlewheeler built for the Murray River. As the largest inland paddlewheeler in the southern hemisphere, it is propelled by its massive stern wheel which you can see in action through the two storey viewing window in the lounge. Catering for just 120 passengers, the onboard atmosphere is relaxed and informal by style, bringing the unique advantages of small ship cruising to the remarkable setting of Australia's outback.

## Facilities onboard the PS Murray Princess

Spa, sauna and gym	Library, video and DVD
Sun deck	Lift (Randell, Cadell and Sturt Decks only)
Bar and two lounges	Guest laundry
Single-sitting dining saloon	Speed boat
Free WiFi	24-hour tea & coffee facilities
Gift shop/Cafe	

## Technical Details

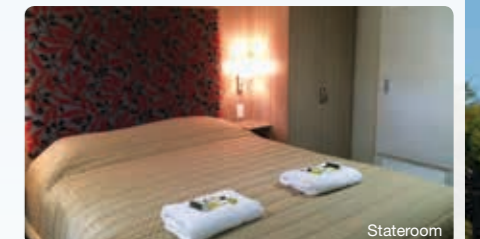
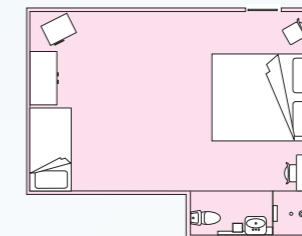
Max. Passengers: 120	Beam: 15 metres
Registry: Mannum, Australia	Draft: 1.2 metres
Tonnage: 1,500 tonnes	Speed: 6 knots
Length: 67 metres	



The PS Murray Princess has 60 cabins and staterooms each with private ensuite, air-conditioning, electric blankets, soap, shampoo, towels and daily servicing. Each cabin is approximately 12sq metres. Four of the outside cabins and their ensuite bathrooms are wheelchair accessible. Two cabins located on Randell Deck are opposite the lift for easy access to the dining and lounge decks.

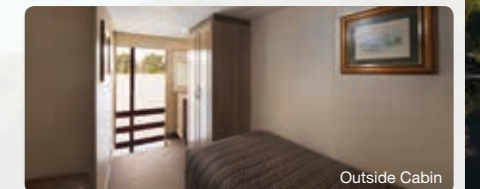
### Staterooms (6)

Our spacious Staterooms are located on the Randell and Cadell decks. Each stateroom offers a double bed (some have an extra single bed) and open onto the outside deck area. Mini-bars, fridges and tea and coffee making facilities and Nespresso machine are also included.



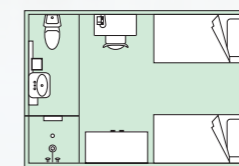
### Outside Cabins (45)

Outside cabins are located on Randell and Cadell Decks and the majority of these cabins have twin bedding with limited double bedded cabins available. Each outside cabin opens onto the outside deck area with picture windows to view the passing scenery.



### Inside Cabins (9)

Inside cabins are located on the lower Chaffey Deck and open onto a wide inside passageway. Inside cabins offer twin bedding with limited double bedded cabins available and have portholes facing the outside.



Set on the broad reaches of the Lower Murray, Mannum is approximately 90 minutes from Adelaide via the South Eastern Freeway or the scenic route through Gumeracha, Birdwood and Palmer. The PS Murray Princess departs from Mary Ann Reserve in Mannum, and either transfers from Adelaide or secure car parking are available to suit your individual holiday plans.



### Adelaide Coach Transfers

Complimentary Adelaide coach transfers depart and return from the following locations and are subject to availability – pre-bookings are essential.

Adelaide Central Bus Station (85 Franklin Street)  
– Pick-up Monday and Friday at 1.30pm

Stamford Plaza Adelaide (150 North Terrace)  
– Pick-up Monday and Friday at 1.45pm

Mercure Grosvenor Hotel Adelaide (125 North Terrace)  
– Pick-up Monday and Friday at 2.00pm

Sage Hotel Adelaide (208 South Terrace)  
– Pick-up Monday and Friday at 2.10pm

The return arrival time to Adelaide on Monday and Friday is approximately 12 noon to 12.30pm, and a NEW option to be transferred to Adelaide Airport is now available – pre-bookings are essential.

### Private Car Transfers – NEW!

Private car transfers are available to/from the Adelaide CBD as well as a return to Adelaide Airport. Additional charges apply and pre-bookings are essential. Prices are available on request.

### Mannum Car Parking

Complimentary car parking is available at Mannum and is subject to availability – pre-bookings are essential.



The PS Murray Princess has 3 main cruises available weekly throughout the year and a NEW 7 night cruise which departs monthly. This comparison chart below makes it easy to see at a glance the different inclusions and experiences each cruise offers.

Inclusions	3 Night Discovery Cruise	4 Night Outback Heritage Cruise	7 Night Murraylands & Wildlife Cruise	7 Night Upper Murraylands Cruise
Complimentary return coach transfers from Adelaide	✓	✓	✓	✓
Complimentary car parking in Mannum	✓	✓	✓	✓
All meals (buffet and a la carte)	✓	✓	✓	✓
Guided nature walks and eco excursions	✓	✓	✓	✓
On-board presentations	✓	✓	✓	✓
Use of spa, sauna and gym	✓	✓	✓	✓
Captain's Dinner and Dance	✓	✓	✓	✓
Live entertainment	✓	✓	✓	✓
24 hour self service tea and coffee bar	✓	✓	✓	✓
Big river gorges and sandstone cliffs	✓	✓	✓	✓
Cruise fares do not include drinks, optional tours and services				
Places Visited				
Mannum	✓	–	✓	–
Murray Bridge	✓	–	✓	–
Salt Bush Flat	✓	–	✓	–
Ngaut Ngaut	–	✓	✓	✓
Salter's Station	–	✓	✓	✓
Sunnydale	–	✓	✓	✓
Swan Reach	–	✓	✓	✓
Waikerie	–	–	–	✓
Morgan	–	–	–	✓
Highlights and Onshore Tours				
'Dragon-Fly' flat-bottomed boat ride	✓	–	✓	✓
Historic Roundhouse tour at Murray Bridge	✓	–	✓	–
Monarto Zoo Wildlife Tour (see page 12)	Optional	–	Optional	–
Historic Mannum Dock Museum Tour (see page 12)	Optional	–	Optional	–
Wine tasting at Burk Salter Boutique Winery	–	✓	✓	✓
Riverside Aussie BBQ at Sunnydale	–	✓	✓	✓
Ngaut Ngaut Aboriginal Reserve guided walking tour	–	✓	✓	✓
Sunnydale Woolshed Show and Native Wildlife Shelter	–	✓	✓	✓
Lock #1 at Blanchetown	–	✓	✓	✓
Big Bend towering sandstone cliffs	–	✓	✓	✓
Scenic tender boat ride	–	✓	✓	✓
Nocturnal Tour at Sunnydale (see page 12)	–	Optional	Optional	Optional
Bush Tucker Breakfast at Sunnydale (see page 12)	–	Optional	Optional	Optional
Swan Reach Museum Tour (see page 12)	–	Optional	Optional	Optional
Banrock Station Wine & Wetland Centre	–	–	–	✓
Caudo Vineyard Cellar Door, Gardens and Orchard	–	–	–	✓
Morgan Museum Tour (see page 12)	–	–	–	Optional
Barossa Wine and Heritage Tour (see page 12)	Optional	Optional	Free	–



# 3 Night Discovery Cruise

Indulge in a long weekend on the beautiful and historic Murray River between Walker Flat and Murray Bridge. Cruise through spectacular riverlands and enjoy the great variety of flora and fauna. You'll take a nature walk, get up close to river birdlife by small boat, visit the township of Murray Bridge and learn about the food and wine of this famous region.

## EARLY BOOKING SAVER FARES

Book more than 60 days in advance and **SAVE UP TO 15%**  
Conditions apply.

### Highlights

- Explore the township of Murray Bridge, or take a tour of the historic Roundhouse
- Visit one of the world's largest open-range zoos on the Monarto Zoo Wildlife Tour (extra cost – see page 12)
- Join a guided walk with the Captain to visit the Mannum Dock Museum (extra cost – see page 12) or free time in Mannum
- Take a guided nature walk at Salt Bush Flat
- See big river gorges and towering sandstone cliffs
- Taste Riverland food and wine (a tasting of 2 reds and 2 white wines plus local produce)
- Get up close to the river birdlife on board the 'Dragon-Fly' flat-bottomed boat
- Dance the night away at the Captain's Dinner and Dance
- Experience one of SA's most popular wine regions on the Barossa Wine & Heritage Tour (extra cost – see page 12)

Prices Per Person	Twin Share	Single	Extra Person
Inside Cabin	\$945	\$1200	N/A
Outside Cabin	\$1288	\$1640	POA
Stateroom	\$1620	\$2060	\$645



### Departure Details

**Departs Selected Fridays 4.30pm**  
Boarding from 2.30pm Mannum (Mary Ann Reserve)  
Returns to Mannum the following Monday 9.00am

Departure Dates	
<b>2017</b>	Oct: 6, 20 & 27
Apr: 7, 14* & 28	Nov: 3, 17 & 24
May: 5, 19 & 26	Dec: 29*
Jun: 2 & 16	<b>2018</b>
Jul: 7*, 21* & 28	Jan: 5, 19 & 26*
Aug: 4, 18 & 25*	Feb: 2, 9 & 23
Sep: 1, 8, 22 & 29	Mar: 2, 9, 23 & 30*

\*Special Event Cruise – see page 13 for details



# 4 Night Outback Heritage Cruise

Cruise on the great Murray River from the historic river port of Mannum to Blanchetown. Follow in the wake of great Australian pioneers and experience the magic and majesty of the spectacular scenery. See a great variety of Australian wildlife, including kangaroos and many of the 350 bird species that inhabit the riverlands.

## EARLY BOOKING SAVER FARES

Book more than 60 days in advance and **SAVE UP TO 15%**  
Conditions apply.

### Highlights

- Cruise through Lock #1 at Blanchetown
- Tour the vineyard and visit the cellar door at Burk Salter Boutique Winery
- Take a guided walking tour of the Swan Reach township and visit the Swan Reach Museum (extra cost – see page 12)
- See the towering sandstone cliffs at Big Bend
- Watch the Sunnydale Woolshed Show and visit the Native Wildlife Shelter
- Enjoy a delicious riverside Aussie BBQ
- Go spotlighting on a Nocturnal Tour at Sunnydale (extra cost – see page 12)
- Enjoy a Bush Tucker Breakfast (extra cost – see page 12)
- Explore the Ngaut Ngaut Aboriginal Reserve archaeological sites with an expert local guide
- Delight in a scenic tender boat ride
- Experience one of SA's most popular wine regions on the Barossa Wine & Heritage Tour (extra cost – see page 12)

Prices Per Person	Twin Share	Single	Extra Person
Inside Cabin	\$1293	\$1635	N/A
Outside Cabin	\$1730	\$2190	POA
Stateroom	\$2155	\$2730	\$871



### Departure Details

**Departs Selected Mondays 4.30pm**  
Boarding from 2.30pm Mannum (Mary Ann Reserve)  
Returns to Mannum the following Friday 9.00am

Departure Dates	
<b>2017</b>	Sep: 4, 11 & 25
Apr: 3, 10 & 17	Oct: 2, 9, 23 & 30
May: 1, 8, 22 & 29	Nov: 6, 20 & 27
Jun: 5 & 19	<b>2018</b>
July: 10*, 24* & 31	Jan: 1, 8, 22 & 29
Aug: 7, 21 & 28	Feb: 5, 12 & 26
	Mar: 5, 12 & 26

\*Special Event Cruise – see page 13 for details



# 7 Night Murraylands and Wildlife Cruise

Discover the dramatic South Australian outback on a cruise along Australia's great inland highway. This 7 night cruise is a unique historic and nature based adventure between Blanchetown and Murray Bridge. Visit interesting places and indigenous sites, enjoy a woolshed and station experience and follow the region's food and wine trail.

## EARLY BOOKING SAVER FARES

Book more than 60 days in advance and **SAVE UP TO 15%** Conditions apply.

### Highlights

- Explore the township of Murray Bridge, or take a tour of the historic Roundhouse
- Visit one of the world's largest open-range zoos on the Monarto Zoo Wildlife Tour (extra cost – see page 12)
- Join a guided walk with the Captain to visit the Mannum Dock Museum (extra cost – see page 12) or free time in Mannum
- Take a guided nature walk at Salt Bush Flat
- Get up close to the river birdlife on board the 'Dragon-Fly' flat-bottomed boat
- Experience one of SA's most popular wine regions on the Barossa Wine & Heritage Tour (complimentary – see page 12)
- Cruise through Lock #1 at Blanchetown
- Tour the vineyard and visit the cellar door at Burk Salter Boutique Winery
- Take a guided walking tour of the Swan Reach township and visit the Swan Reach Museum (extra cost – see page 12)
- See the towering sandstone cliffs at Big Bend
- Watch the Sunnysdale Woolshed Show and visit the Native Wildlife Shelter
- Enjoy a delicious riverside Aussie BBQ
- Go spotlighting on a Nocturnal Tour at Sunnysdale (extra cost – see page 12)
- Enjoy a Bush Tucker Breakfast (extra cost – see page 12)
- Explore the Ngaut Ngaut Aboriginal Reserve archaeological sites with an expert local guide
- Delight in a scenic tender boat ride

Prices Per Person	Twin Share	Single	Extra Person
Inside Cabin	\$1928	\$2440	N/A
Outside Cabin	\$2705	\$3425	POA
Stateroom	\$3245	\$4125	\$1295

### Departure Details

**Departs Selected Mondays and Fridays 4.30pm**  
Boarding from 2.30pm Mannum (Mary Ann Reserve)  
Returns to Mannum the following Monday and Friday 9.00am

Departure Dates	2017	2018
Oct:	2, 6, 20, 23, 27 & 30	Jan: 1, 5, 19, 22*, 26* & 29
Nov:	3, 17, 20 & 24	Feb: 2, 5, 9, 23 & 26
Dec:	29*	Mar: 2, 5, 9, 23 & 26*
2017	Apr: 3, 7, 10*, 14* & 28	Jun: 2 & 16
2018	May: 1, 5, 19, 22, 26 & 29	Jul: 7*, 21*, 24*, 28 & 31
	Jun: 2 & 16	Aug: 4, 18, 21*, 25* & 28
	Jul: 7*, 21*, 24*, 28 & 31	Sep: 1, 4, 8, 22, 25 & 29

\*Part of Special Event Cruise – see page 13 for details



Map is based on Friday departures – Monday departures follow a different route.

# 7 Night Upper Murraylands Cruise

**NEW CRUISE!**

Explore the breathtaking Murraylands whilst cruising through ancient gorges and red gum forests, past towering sandstone cliffs and historic ports, local vineyards and nature trails. Over the 7 nights, cruise between Mannum and Morgan and experience the sights and sounds of river life with the beauty of its ever-changing landscape.

## EARLY BOOKING SAVER FARES

Book more than 60 days in advance and **SAVE UP TO 15%** Conditions apply.

### Highlights

- See the towering sandstone cliffs at Big Bend
- Get up close to the river birdlife on board the 'Dragon-Fly' flat-bottomed boat
- Cruise through Lock #1 at Blanchetown
- Take a scenic coach transfer from Blanchetown and visit the picturesque town of Waikerie
- Enjoy a buffet lunch and wine tastings at Banrock Station Wine and Wetland Centre
- Explore the gardens and orchards, and visit the cellar door at Caudo Vineyard
- Take a guided walking tour of the Morgan and Swan Reach townships, and visit their historical museums (Gold coin donation at entry)
- Tour the vineyard and enjoy a cellar door tasting at Burk Salter Boutique Winery
- Watch the Sunnysdale Woolshed Show and visit the Native Wildlife Shelter
- Enjoy a delicious riverside Aussie BBQ
- Go spotlighting on a Nocturnal Tour at Sunnysdale (extra cost – see page 12)
- Enjoy a Bush Tucker Breakfast (extra cost – see page 12)
- Learn about the Ngaut Ngaut Aboriginal Reserve archaeological sites with an expert local guide
- Delight in a scenic tender boat ride

Prices Per Person	Twin Share	Single	Extra Person
Inside Cabin	\$2238	\$2835	N/A
Outside Cabin	\$3018	\$3830	POA
Stateroom	\$3775	\$4790	\$1516

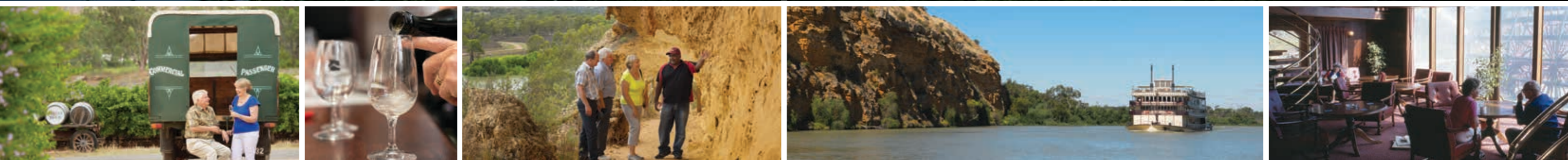


### Departure Details

**Departs Selected Fridays 4.30pm**  
Boarding from 2.30pm Mannum (Mary Ann Reserve)  
Returns to Mannum the following Friday 9.00am

Departure Dates	2017	2018
Sep:	15	Jan: 12
Oct:	13	Feb: 16
Nov:	10	Mar: 16
2017	Apr: 21	
2018	May: 12	
	Jun: 9	
	Jul: 14*	
	Aug: 11	

\*Special Event Cruise – see page 13 for details



# Optional Onshore Tours

A range of onshore tours are available to all cruise passengers, depending on which cruise you decide to do. Whilst most of them can be booked once onboard your cruise, we strongly recommend that both the Monarto Zoo and Barossa tours are booked prior to departure to avoid disappointment.

## Optional Onshore Tours (extra cost)



### Monarto Zoo Wildlife Tour – \$60pp (pre-bookings recommended)

Enjoy a guided coach tour of one of the largest open-range zoos in the world, spanning more than 1,500 acres and home to more than 50 species of exotic and native mammals, birds and reptiles.



### Barossa Wine & Heritage Tour – \$158pp (pre-bookings recommended)

Travel to the Barossa region through the picturesque Adelaide Hills, tour the cellar door and tastings at Chateau Yaldara and Chateau Barossa, plus a shared platter lunch at the SA Company Store.



### Nocturnal Tour at Sunnydale – \$16pp (onboard bookings only)

Go spotlighting through the remnants of the old Sunnydale station. A unique, Australian wildlife experience, in purpose-built carts, where you may see kangaroos, wombats, foxes, bats and owls.



### Bush Tucker Breakfast – \$35pp (onboard bookings only)

Enjoy a traditional breakfast on the shores of the river. From kangaroo sausages and scrambled eggs to wattleseed pancakes and billy tea, the early morning sounds of the river will be a great way to start the day.



### Historic Mannum Dock Museum – \$5pp (payable on entry)

Home to the fully restored Paddle Steamer Marion, built in 1897. It houses a variety of maritime artefacts relating to the history of the Murray River navigation.



### Swan Reach Museum – Gold Coin Donation (payable on entry)

Housed in the original school building that was built in 1917, the Museum's collection consists of documents, photographs and historical items relating to the history of education and social history of the area.



### Morgan Museum – Gold Coin Donation (payable on entry)

Learn about early life in Morgan, from farming activities to riverboat trade. A collection of horse drawn vehicles and model paddlewheelers are on display.



# Special Event Cruises and Group Charters

Our Special Event Cruise itineraries are select cruises with various themes or occasions. They may have a different itinerary to our regular departures, or we may have added some bonus experiences to enhance our normal cruises. Departures of our Special Event Cruises for 2017/18 include:

Special Events	Departure Date	Duration
Easter Cruise	14 April 2017	3 Nights
Christmas in July	7 & 21 July 2017	3 Nights
	10 & 24 July 2017	4 Nights
	7, 14* & 21 July 2017	7 Nights
'Hot August Night' – Music Cruise	25 August 2017	3 Nights
Mannum to Renmark	1 December 2017	7 Nights
Christmas Cruise – Renmark to Mannum	22 December 2017	7 Nights
New Year's Eve Cruise	29 December 2017	3 Nights
Australia Day Cruise	26 January 2018	3 Nights
Easter Cruise	30 March 2018	3 Nights

\*New 7 Night Upper Murraylands Cruise. For more details, please see page 11 or visit [www.murrayprincess.com.au](http://www.murrayprincess.com.au)

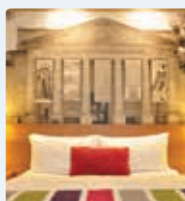
## Groups and Charters

We can assist with bookings for any group, including Probus Groups and Lifestyle Villages. You may like to travel as a small group (minimum numbers required), or charter the entire boat and choose your own course, or select from our popular charter itineraries. For more details, please visit [www.murrayprincess.com.au](http://www.murrayprincess.com.au)



South Australia is a state of many contrasts with rugged outback wilderness, scenic mountain ranges, an extensive coastline, a famous offshore island (Kangaroo Island) and a large, meandering river (the Murray River). There are vast national parks and world heritage listed areas, caves, wetlands and fossil regions to explore. South Australia is the most important wine producing state with 16 wine regions including the famous Barossa and now produces over 50% of Australia's national production. If you wish to extend your stay in South Australia, we can assist you with accommodation and touring, with a couple of suggestions listed below.

## Pre or Post Cruise Accommodation



### Mercure Grosvenor Hotel Adelaide

Located on bustling North Terrace, Mercure Grosvenor Hotel Adelaide is the perfect base to explore the city and its surrounds. Amidst classic contemporary interiors, 181 modern designed rooms and suites feature comfortable furnishings, elegant colour palettes and state-of-the-art amenities.



- Bar • Foxtel • Luggage Storage
- Disabled Facilities
- Restaurant • WiFi access (fees apply)
- Car Parking (fees apply)
- 24 hour Room Service and Reception



### Stamford Plaza Adelaide

Situated in the heart of the city on Adelaide's key cultural boulevard, North Terrace, Stamford Plaza Adelaide offers 334 elegantly furnished, spacious guest rooms and suites, with views of the Adelaide parklands, Adelaide Oval or city.



- R/C Air-conditioning • Foxtel
- Bar Facilities • Car Parking (fees apply)
- Disabled Facilities • Gymnasium
- Free WiFi in public areas
- 24 hour Room Service and Reception
- Cocktail Lounge • 3 Restaurants
- Outdoor Rooftop Heated Pool and Spa

## Pre or Post Cruise Touring



### Adelaide City Highlights – \$66pp

Adelaide is a cosmopolitan city offering a wealth of experiences including great food and wine, arts and culture, and world-class sporting events. See the best of Adelaide and learn about its history on a friendly and relaxed tour.



### Barossa Food and Wine Experience – \$145pp

Travel in a small group and enjoy a food and wine journey to South Australia's premium wine region, the Barossa. Take time to sample some of the Barossa's finest wines and gourmet food.



### McLaren Vale Food and Wine Indulgence – \$142pp

Enjoy a day exploring the beautiful McLaren Vale wine region where you will enjoy wine tastings and local produce from some of the most popular cellar doors, including Wirra Wirra and d'Arenberg.



### Kangaroo Island Experience – \$283pp

A popular tour for visitors who may only have one day for touring, this tour will ensure that you experience many of the main highlights of Kangaroo Island, including Seal Bay, Remarkable Rocks and Admirals Arch.



### Seal Bay Discovery – \$283pp

Kangaroo Island is renowned for its wildlife and on this tour, you will discover some of the most popular wildlife attractions on Kangaroo Island, including Seal Bay, Raptor Domain and Kangaroo Island Wildlife Park.



**BOOK A PACKAGE & SAVE!**

Fly, rail or drive into Adelaide and enjoy a stay in this delightful city for a few nights including a tour around the Adelaide CBD and the Adelaide Hills, before travelling to Kangaroo Island. Discover South Australia's premier nature-based tourism destination on a relaxed yet comprehensive two day tour. Finish your South Australian experience aboard the PS Murray Princess for a 3, 4 or 7 night cruise on the beautiful and historic Murray River.

## Highlights

Enjoy 3 nights accommodation in Adelaide

Combine the highlights of the City with the quaint but classic Adelaide Hills on a full day tour

Visit Haigh's Chocolates factory for a tour and tasting (except Sundays and SA Public Holidays)

See St Peter's Cathedral, Adelaide Oval and enjoy the view from Mt Lofty Summit

Wander the main street of Hahndorf, exploring the many shops and businesses with German origin

Experience the fascinating wildlife, spectacular coastal scenery, stunning landscapes and the unique local produce of Kangaroo Island on a 2 day tour

Visit the Emu Ridge Eucalyptus Distillery, walk amongst a colony of wild Australian sea lions at Seal Bay, marvel at the Birds of Prey In-flight Display and feed kangaroos at Kangaroo Island Wildlife Park

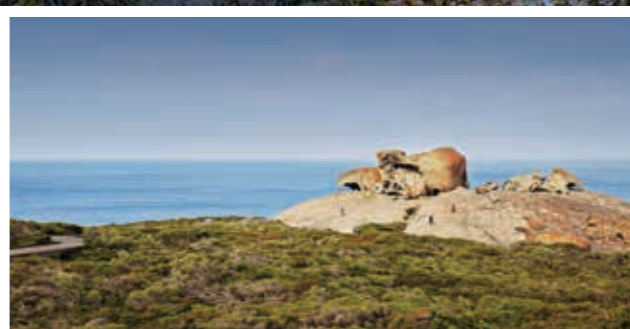
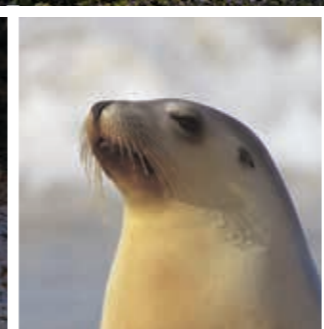
Taste local honey at Clifford's Honey Farm, see koalas relaxing in the eucalypts and see the iconic sights of Admirals Arch and Remarkable Rocks at Flinders Chase National Park

Enjoy overnight accommodation on Kangaroo Island including breakfast and lunch on both days

Choose between a 3, 4 or 7 night cruise aboard the PS Murray Princess (see pages 8-11 for full details)

Prices Per Person	Departs	Twin Share	Single
8 Days / 7 Nights (ADL3KIMR3)	Mon	\$1713	\$2308
9 Days / 8 Nights (ADL3KIMR4)	Thu	\$2026	\$2700
12 Days / 11 Nights (ADL3KIMR7)	Mon/Thu	\$2597	\$3424

Prices are per person based on a twin share and single room basis including an Inside Cabin on the PS Murray Princess, a Standard Room at the Mercure Grosvenor Hotel Adelaide and an Ocean View Room at the Kangaroo Island Seaside Inn, Kingscote. Selected departure dates apply to all packages and are subject to availability. Some dates may not be available due to special events or maintenance of the PS Murray Princess. Please refer to [www.murrayprincess.com.au](http://www.murrayprincess.com.au) for package dates and details. Subject to standard terms and conditions (see back page).





# Terms and Conditions

## General

All costs, itinerary details, cruise dates, package inclusions and accommodation information are correct at the time of publishing; however these can be subject to alteration, sometimes without notice. All services and reservations provided are subject to the conditions of the principal providers and no responsibility is accepted by Captain Cook Cruises (SeaLink Travel Group) for misrepresentation, unforeseen omissions or additional costs incurred, including those arising from adverse weather conditions or any situations beyond the control of Captain Cook Cruises (SeaLink Travel Group). Refunds may not be available for unused services. All cruises and packages featuring the Murray Princess are subject to the terms and conditions of the Passenger Cruise Contract, which is provided when booking any Murray Princess cruise or package. Travel insurance is highly recommended. The Murray Princess goes in for maintenance twice a year – cruises will not operate between 23 June to 6 July, and 8 to 21 December 2017.

## Pricing

All fares and prices are in Australian Dollars and valid from 1 April 2017 to 31 March 2018. Prices exclude onboard charges such as optional tours, services and drinks. All fares and prices are subject to availability, surcharges, blackout periods, minimum night stays and seasonal variations. Always check your travel documentation for final prices.

## Early Booking Saver (EBS) Fares

EBS fares must be booked more than 60 days in advance in order to receive the discount, and are subject to availability at the time of booking. A select number of cabins have been set aside for this special fare. Once these cabins have been sold, prices revert to Standard Fares. Travel in June, July, August, January or February and the EBS saving will be 15% of your cruise fare. Or save 10% off your cruise fare if you travel in April, May, September, October, November, December or March.

## Child Policy

Twin share pricing applies to all children 4 years and above. Children under 3 years of age travel free of charge provided they use existing bedding, however children under 3 years are not recommended on Murray Princess Cruises.

## Room Configurations

Twin share prices are based on a 'twin' cabin consisting of two single beds. A surcharge of \$50 per room per night applies to all Inside Cabins and Outside Cabins with a double bed. These cabins are limited and subject to availability. No surcharge applies for Staterooms. Extra person prices are based on three people sharing one room with existing bedding (eg double/queen and a single bed). Outside Cabins and Staterooms can accommodate an extra person based on 1 double bed and 1 single bed, but availability is limited. Outside Cabin Extra Person prices are available on enquiry.

## Booking and Final Payment

To make a booking, a deposit of \$200 per person is required within 48 hours of booking. The passenger cruise contract and special diet request form must be returned within 48 hours of booking confirmation or together with your deposit. Final payment is required 60 days prior to travel. If booking is made within 60 days of travel, full payment must be made at time of booking. For all bookings made online, full payment must be made at time of booking.

## Credit Card Fees

A fee of 3% of total booking cost will be charged when paying for travel, service, package or product by Diners or American Express card. 1.5% fees are charged when payment is made by Visa or Mastercard.

## Travel Insurance

Holiday plans can be disrupted and cancellation fees can be costly. Travel insurance is inexpensive and highly recommended, and is available when you book your cruise online. Please note that Travel Insurance may not cover disruptions

caused by mechanical breakdowns or adverse weather conditions so please check your insurance policy.

## Cancellation Fees

For Murray Princess Cruises including any South Australia packages featuring Murray Princess (operated by Captain Cook Cruises), the cancellation of a booking or part thereof will incur the following fees:

- More than 60 days before departure – \$50 per person
- Between 30 and 60 days before departure – Loss of deposit
- Between 15 and 30 days before departure – 50% of total cost
- Less than 14 days before departure – 100% of total cost

Cancellation fees up to 50% of the cruise fare less an administration fee of \$50 per person, may be applied to another cruise if completed within 12 months of the original booking. Special payment and cancellation conditions apply for groups of 15 or more and Special Event Cruises, which are available on application.

No refunds will be made for services not availed once travel has commenced. All refund claims must be made in writing. Please note operators (other than SeaLink Travel Group) reserve the right to charge cancellation fees in addition to the above.

## Amendment Fees

Due to the complexity, staff time and communication costs of the booking process, a charge of \$22 (incl GST) may apply to each modification made after the original booking. Please note that online bookings cannot be modified online and must be made through our Sales Centre by calling 1300 729 938 (within Australia) or +61 8 8202 8698 (from outside Australia) or by emailing [murrayprincess@sealink.com.au](mailto:murrayprincess@sealink.com.au).

## Conditions of Travel and Booking

In these conditions "the Company" means Captain Cook Cruises (SeaLink Travel Group), its servants and agents and "the passenger" means the passenger booked to travel. Travel must be completed within 12 months

of payment. These conditions shall be governed by and construed in accordance with the laws of the Commonwealth of Australia and any Australian State. The Company reserves the right to cancel, vary this service in any way, or substitute any ferry or other means of transport without incurring any liability.

Fares, times, schedules and routes are subject to alteration, without prior notice, at the discretion of the Company. The Company shall not be liable for any loss or damage which may arise in the event of cancellation of this service or the abandonment of the service during the course thereof (should the Company or any of its servants or agents decide that such abandonment is necessary) or of any deviation or delay in any service arising from any cause whatsoever. In any such event the Company will not be liable in any way for consequential damage including, but not limited to, the cost of accommodation or for any alternative means of travel which may arise and any additional expense so arising shall be the liability of the passenger.

The Company accepts no responsibility for loss of, or damage to, any vehicle being carried for the passenger, or luggage, or for consequential damages arising therefrom whether sustained during off-loading or transportation, and whether arising from negligence, malfunction of the vessel or other cause, except to the extent that the exclusion of such liability is prohibited by law. The Company accepts no responsibility for any injury and/or death of a passenger travelling on this service whether caused by negligence, malfunction to the vessel or other cause except to the extent that exclusion of such liability is prohibited by law.

Refer to [www.murrayprincess.com.au](http://www.murrayprincess.com.au) for full terms and conditions.



## For Bookings:

Call 1300 729 938 or visit [murrayprincess.com.au](http://murrayprincess.com.au)

Find us on

[facebook.com/PSMurrayPrincess](https://www.facebook.com/PSMurrayPrincess)

## Adelaide Office:

440 King William Street  
Adelaide, SA 5000

## Mannum Office:

96 Randell Street  
Mannum, SA 5238

Your Travel Agent

Agent Bookings: Phone 1300 729 938