

Murray River Cruising

ON THE PS MURRAY PRINCESS

2019/20 Cruises and Holidays

**EARLY BOOKING
SAVER FARES**

Book more than
60 days in advance and

SAVE UP TO 15%

Conditions apply.



Relax, Discover, Enjoy.

Pulling away from Mannum you can feel the stresses of everyday life simply wash away. Cities and traffic give way to the soothing calmness of the river as it flows gently towards the sea.

Like a wildlife refuge, there are birds of all shapes and sizes. Pelicans glide effortlessly across the water, while spoonbills peer down from the treetops, and parrots chatter excitedly as they skip from branch to branch.

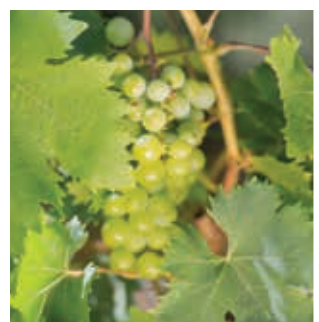
A cruise along the Murray recalls a distant age of riverboat trade, when goods and passengers moved between busy ports. Step further back in time on a guided nature walk, exploring ancient forests and wetlands where Aboriginal people once dined on shellfish and carved canoes from the eucalypts.

The view from the sun deck is magnificent, particularly in the late afternoon when the setting sun turns the towering cliffs a fiery orange. With a coffee, cool drink or glass of the local drop in hand, gaze out across billabongs, woodlands and pastures.

Each night a different part of the river becomes home, as the Murray Princess finds quiet moorage in plenty of time for dinner, an evening chat with your fellow passengers and a peaceful night's sleep.

There's no better way to experience the tranquillity and timelessness of Australia's mightiest river than aboard the paddlewheeler, PS Murray Princess.

*Introduction by John Pedler,
Editorial and Video Content Specialist, RAA Group*



Contents

About the PS Murray Princess	4 – 5
Joining your Cruise	6
Compare our Cruises	7
3 Night Discovery Cruise	8
4 Night Outback Heritage Cruise	9
7 Night Murraylands and Wildlife Cruise	10
7 Night Upper Murraylands Cruise	11
Optional Onshore Tours	12
Special Event Cruises and Group Charters	13
Pre or Post Cruise Accommodation and Touring	14
Adelaide, Kangaroo Island and Murray River Packages	15
Terms and Conditions	Back Cover



About the PS Murray Princess

With a character and charm of yesteryear, the PS Murray Princess is an authentic paddlewheeler built for the Murray River. As the largest inland paddlewheeler in the southern hemisphere, it is propelled by its massive stern wheel which you can see in action through the two storey viewing window in the lounge. Catering for just 120 passengers, the onboard atmosphere is relaxed and informal by style, bringing the unique advantages of small ship cruising to the remarkable setting of this Australian outback river region.

Facilities onboard the PS Murray Princess

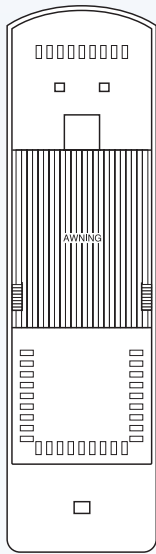
Sun deck	Library, video and DVD
Bar and two lounges	Lift (Randell, Cadell and Sturt Decks only)
Single-sitting dining saloon	Guest laundry
Free Wi-Fi	Tender boat
Gift shop/Cafe	24-hour tea & coffee facilities
Gym with exercise equipment	

Technical Details

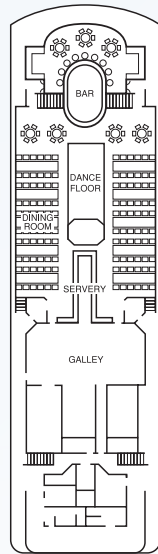
Max. Passengers: 120	Beam: 15 metres
Registry: Mannum, Australia	Draft: 1.2 metres
Tonnage: 1,500 tonnes	Speed: 6 knots
Length: 67 metres	



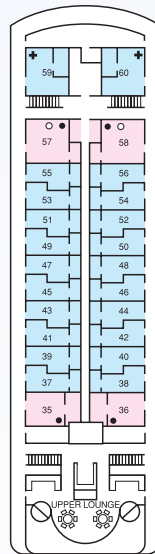
Sun Deck



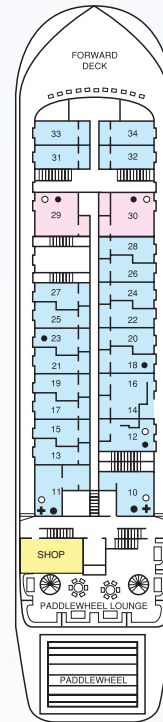
Sturt Deck



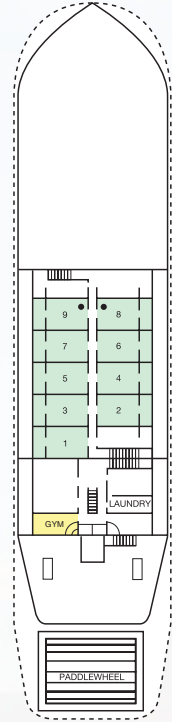
Cadell Deck



Randell Deck



Chaffey Deck

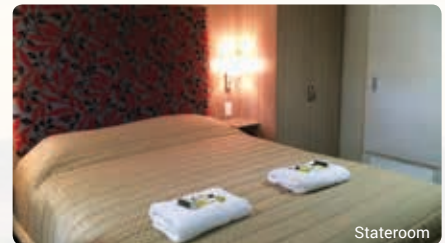
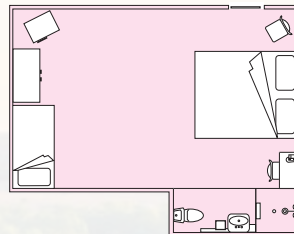


Stateroom
 Outside Cabin
 Inside Cabin

The PS Murray Princess has 60 cabins and staterooms each with private ensuite, electric blankets, soap, shampoo, towels and daily servicing. Each cabin is approximately 12sq metres. Four of the outside cabins and their ensuite bathrooms are wheelchair accessible. Two cabins located on Randell Deck are opposite the lift for easy access to the dining and lounge decks.

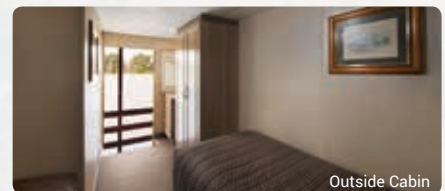
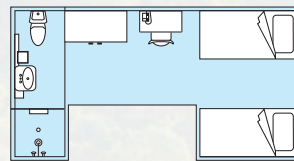
Staterooms (6)

Our spacious Staterooms are located on the Randell and Cadell decks. Each stateroom offers a double bed (some have an extra single bed) and open onto the outside deck walkway. Mini-bars, fridges and tea and coffee making facilities are also included.



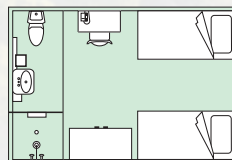
Outside Cabins (45)

Outside cabins are located on Randell and Cadell Decks and the majority of these cabins have twin bedding with limited double bedded cabins available. Each outside cabin opens onto the outside deck walkway with picture windows to view the passing scenery.



Inside Cabins (9)

Inside cabins are located on the lower Chaffey Deck and open onto a wide inside passageway. Inside cabins offer twin bedding with limited double bedded cabins available and have a small window high in the ensuite facing the outside. Note: stair access only.



Joining Your Cruise in Mannum

Set on the broad reaches of the Lower Murray, Mannum is approximately 90 minutes from Adelaide via the South Eastern Freeway or the scenic route through Gumeracha, Birdwood and Palmer. The PS Murray Princess departs from Mary Ann Reserve in Mannum, and either transfers from Adelaide or secure car parking are available to suit your individual holiday plans.



Adelaide Coach Transfers

Complimentary Adelaide coach transfers depart and return from the following locations and are subject to availability – pre-bookings are essential.

Adelaide Central Bus Station (85 Franklin Street)
– Pick-up Monday and Friday at 1.20pm

Majestic Roof Garden Hotel (55 Frome Street)
– Pick-up Monday and Friday at 1.30pm

Stamford Plaza Adelaide (150 North Terrace)
– Pick-up Monday and Friday at 1.45pm

Mercure Grosvenor Hotel Adelaide (125 North Terrace)
– Pick-up Monday and Friday at 2.00pm

Sage Hotel Adelaide (208 South Terrace)
– Pick-up Monday and Friday at 2.10pm

The return arrival time to Adelaide on Monday and Friday is approximately 11.00am, and an option to be transferred to Adelaide Airport is available – pre-bookings are essential.

Private Car Transfers

Private car transfers are available to/from the Adelaide CBD as well as a return to Adelaide Airport. Additional charges apply and pre-bookings are essential. Prices are available on request.

Mannum Car Parking

Complimentary car parking is available at Mannum and is subject to availability – pre-bookings are essential.



Compare Our Cruises

The PS Murray Princess has 3 main cruises available weekly throughout the year and a 7 night cruise which departs monthly. This comparison chart below makes it easy to see at a glance the different inclusions and experiences each cruise offers.

Inclusions	3 Night Discovery Cruise	4 Night Outback Heritage Cruise	7 Night Murraylands & Wildlife Cruise	7 Night Upper Murraylands Cruise
Complimentary return coach transfers from Adelaide	✓	✓	✓	✓
Complimentary car parking in Mannum	✓	✓	✓	✓
All meals (buffet and a la carte)	✓	✓	✓	✓
Guided nature walks and eco excursions	✓	✓	✓	✓
On-board presentations	✓	✓	✓	✓
Use of gym	✓	✓	✓	✓
Captain's Dinner and Dance	✓	✓	✓	✓
Live entertainment	✓	✓	✓	✓
24 hour self service tea and coffee bar	✓	✓	✓	✓
Big river gorges and sandstone cliffs	–	✓	✓	✓
Cruise fares do not include drinks, optional tours and services				
Places Visited				
Mannum (all cruises depart and return to Mannum)	–	–	✓	–
Murray Bridge	✓	–	✓	–
Salt Bush Flat	✓	–	✓	–
Ngaut Ngaut Aboriginal Reserve	–	✓	✓	✓
Blanchetown	–	✓	✓	–
Sunnydale	–	✓	✓	✓
Swan Reach	–	✓	✓	✓
Morgan	–	–	–	✓
Waikerie	–	–	–	✓
Highlights and Onshore Tours				
'Dragon-Fly' flat-bottomed boat ride	✓	–	✓	✓
Historic Roundhouse tour at Murray Bridge	✓	–	✓	–
Monarto Zoo Wildlife Tour (see page 12)	Optional	–	Optional	–
Wine tasting at Burk Salter Boutique Winery	–	✓	✓	–
Riverside Aussie BBQ at Sunnydale	–	✓	✓	✓
Ngaut Ngaut Aboriginal Reserve guided walking tour	–	✓	✓	✓
Sunnydale Woolshed Show and Native Wildlife Shelter	–	✓	✓	✓
Lock #1 at Blanchetown	–	✓	✓	✓
Big Bend towering sandstone cliffs	–	✓	✓	✓
Scenic tender boat ride	–	✓	✓	✓
Nocturnal Tour at Sunnydale (see page 12)	–	Optional	Optional	Optional
Bush Tucker Breakfast at Sunnydale (see page 12)	–	Optional	Optional	Optional
Swan Reach Museum Tour (see page 12)	–	Optional	Optional	Optional
Banrock Station Wine & Wetland Centre	–	–	–	✓
Caudo Vineyard Cellar Door, Gardens and Orchard	–	–	–	✓
Morgan Museums Guided Tour	–	–	–	✓
Barossa Wine and Heritage Tour (see page 12)	Optional	Optional	Free	–



3 Night Discovery Cruise

Indulge in a long weekend on the beautiful and historic Murray River between Walker Flat and Murray Bridge. Cruise through spectacular riverlands and enjoy the great variety of flora and fauna. You'll take a nature walk, get up close to river birdlife by small boat, visit the township of Murray Bridge and learn about the food and wine of this famous region.

EARLY BOOKING SAVER FARES
 Book more than 60 days in advance and **SAVE UP TO 15%**
 Conditions apply.

Highlights

- Explore the township of Murray Bridge, or take a tour of the historic Roundhouse
- Visit one of the world's largest open-range zoos on the Monarto Zoo Wildlife Tour (optional – see page 12)
- Take a guided nature walk at Salt Bush Flat
- Taste Riverland food and wine (a tasting of 2 reds and 2 white wines plus local produce)
- Get up close to the river birdlife on board the 'Dragon-Fly' flat-bottomed boat
- Dance the night away at the Captain's Dinner and Dance
- Experience one of SA's most popular wine regions on the Barossa Wine & Heritage Tour (optional – see page 12)

Prices Per Person	Twin Share	Single	Extra Person
Inside Cabin	\$999	\$1350	N/A
Outside Cabin	\$1365	\$1850	POA
Stateroom	\$1720	\$2325	\$685



Departure Details

Departs Selected Fridays at 4.30pm
 Boarding from 2.30pm Mannum (Mary Ann Reserve)
 Returns to Mannum the following Monday 9.00am

2019 Departure Dates

- Apr: 5, 12, 19*, 26
- May: 3, 17, 24, 31
- Jun: 14
- Jul: 5*, 12*, 19*, 26*
- Aug: 2, 9, 23*, 30
- Sep: 6, 20

- Oct: 4, 18, 25
- Nov: 1, 8, 22, 29
- Dec: 6, 13

2020 Departure Dates

- Feb: 7, 21, 28
- Mar: 6, 20, 27

*Special Event Cruise – see page 13 for details



4 Night Outback Heritage Cruise

Cruise on the great Murray River from the historic river port of Mannum to Blanchetown. Follow in the wake of great Australian pioneers and experience the magic and majesty of the spectacular scenery. See a great variety of Australian wildlife, including kangaroos and many of the 350 bird species that inhabit the riverlands.

EARLY BOOKING SAVER FARES
Book more than 60 days in advance and **SAVE UP TO 15%**
Conditions apply.

Highlights

- Cruise through Lock #1 at Blanchetown
- Tour the vineyard and visit the cellar door at Burk Salter Boutique Winery
- Take a guided walking tour of the Swan Reach township and visit the Swan Reach Museum (optional – see page 12)
- See the towering sandstone cliffs at Big Bend
- Watch the Sunnydale Woolshed Show and visit the Native Wildlife Shelter
- Enjoy a delicious riverside Aussie BBQ
- Go spotlighting on a Nocturnal Tour at Sunnydale (optional – see page 12)
- Enjoy a Bush Tucker Breakfast (optional – see page 12)
- Explore the Ngaut Ngaut Aboriginal Reserve archaeological sites with an expert local guide
- Delight in a scenic tender boat ride
- Experience one of SA's most popular wine regions on the Barossa Wine & Heritage Tour (optional – see page 12)

Prices Per Person

Prices Per Person	Twin Share	Single	Extra Person
Inside Cabin	\$1370	\$1855	N/A
Outside Cabin	\$1830	\$2485	POA
Stateroom	\$2285	\$3100	\$925



Departure Details

Departs Selected Mondays at 4.30pm
Boarding from 2.30pm Mannum (Mary Ann Reserve)
Returns to Mannum the following Friday 9.00am

2019 Departure Dates

Apr: 1, 8, 15, 22*, 29
May: 6, 20, 27
Jun: 3, 17
Jul: 8*, 15*, 22*, 29
Aug: 5, 12, 26
Sep: 2, 9, 23

Oct: 7, 21, 28
Nov: 4, 11, 25
Dec: 2, 9, 16

2020 Departure Dates

Feb: 10, 24
Mar: 2, 9, 23, 30

*Special Event Cruise – see page 13 for details



7 Night Murraylands and Wildlife Cruise

Discover the dramatic South Australian outback on a cruise along Australia's great inland highway. This 7 night cruise is a unique historic and nature based adventure between Blanchetown and Murray Bridge. Visit interesting places and indigenous sites, enjoy a woolshed and station experience and follow the region's food and wine trail.

EARLY BOOKING SAVER FARES

Book more than 60 days in advance and **SAVE UP TO 15%**

Conditions apply.

Highlights

Explore the township of Murray Bridge, or take a tour of the historic Roundhouse

Visit one of the world's largest open-range zoos on the Monarto Zoo Wildlife Tour (optional – see page 12)

Take a guided nature walk at Salt Bush Flat

Get up close to the river birdlife on board the 'Dragon-Fly' flat-bottomed boat

FREE Barossa Wine and Heritage Tour to one of SA's most popular wine region (see page 12)

Cruise through Lock #1 at Blanchetown

Tour the vineyard and visit the cellar door at Burk Salter Boutique Winery

Take a guided walking tour of the Swan Reach township and visit the Swan Reach Museum (optional – see page 12)

See the towering sandstone cliffs at Big Bend

Watch the Sunnydale Woolshed Show and visit the Native Wildlife Shelter

Enjoy a delicious riverside Aussie BBQ

Go spotlighting on a Nocturnal Tour at Sunnydale (optional – see page 12)

Enjoy a Bush Tucker Breakfast (optional – see page 12)

Explore the Ngaut Ngaut Aboriginal Reserve archaeological sites with an expert local guide

Delight in a scenic tender boat ride

Departure Details

Departs Selected Mondays and Fridays at 4.30pm

Boarding from 2.30pm Mannum (Mary Ann Reserve)

Returns to Mannum the following Monday and Friday 9.00am

2019 Departure Dates

Apr: 1, 5, 8, 12, 15, 19*, 22*, 26, 29
 May: 3, 17, 20, 24, 27, 31
 Jun: 14
 Jul: 5*, 8*, 12*, 15*, 19*, 22*, 26*, 29
 Aug: 2, 5, 9, 23*, 26, 30

Sep: 2, 6, 20
 Oct: 4, 18, 21, 25, 28
 Nov: 1, 4, 8, 22, 25, 29
 Dec: 2, 6, 9, 13

2020 Departure Dates

Feb: 7, 21, 24, 28
 Mar: 2, 6, 20, 23, 27, 30

*Special Event Cruise – see page 13 for details

Prices Per Person	Twin Share	Single	Extra Person
Inside Cabin	\$2060	\$2780	N/A
Outside Cabin	\$2885	\$3900	POA
Stateroom	\$3465	\$4680	\$1385



7 Night Upper Murraylands Cruise

Explore the breathtaking Murraylands whilst cruising through ancient gorges and red gum forests, past towering sandstone cliffs and historic ports, local vineyards and nature trails. Over the 7 nights, cruise between Mannum and Morgan and experience the sights and sounds of river life with the beauty of its ever-changing landscape.

EARLY BOOKING SAVER FARES

Book more than 60 days in advance and **SAVE UP TO 15%**

Conditions apply.

Highlights

- See the towering sandstone cliffs at Big Bend
- Get up close to the river birdlife on board the 'Dragon-Fly' flat-bottomed boat
- Cruise through Lock #1 at Blanchetown
- Take a scenic coach transfer from Morgan and visit the picturesque town of Waikerie
- Enjoy a buffet lunch and wine tastings at Banrock Station Wine and Wetland Centre
- Explore the gardens and orchards, and visit the cellar door at Caudo Vineyard
- Take a guided walking tour of the Morgan and Swan Reach townships, and visit their historical museums (Gold coin donation at entry)
- Watch the Sunnydale Woolshed Show and visit the Native Wildlife Shelter
- Enjoy a delicious riverside Aussie BBQ
- Go spotlighting on a Nocturnal Tour at Sunnydale (optional – see page 12)
- Enjoy a Bush Tucker Breakfast (optional – see page 12)
- Learn about the Ngaut Ngaut Aboriginal Reserve archaeological sites with an expert local guide
- Delight in a scenic tender boat ride

Prices Per Person	Twin Share	Single	Extra Person
Inside Cabin	\$2369	\$3205	N/A
Outside Cabin	\$3195	\$4335	POA
Stateroom	\$4005	\$5425	\$1610



Departure Details

Departs Selected Fridays at 4.30pm

Boarding from 2.30pm Mannum (Mary Ann Reserve)
Returns to Mannum the following Friday 9.00am

2019 Departure Dates

May: 10
Jun: 7
Aug: 16
Sep: 13
Oct: 11

Nov: 15
Dec: 20*

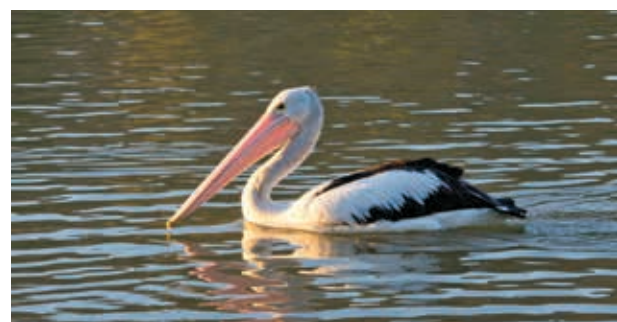
2020 Departure Dates

Feb: 14
Mar: 13

*Special Event Cruise – see page 13 for details

Departs selected Fridays

- 1 Caumamont
- 2 Sugar Shack
- 3 Morgan
- ★ Waikerie
- ★ Banrock Station Wine & Wetland Centre
- 4 326km Mark
- ★ Caudo Vineyard
- 5 Turnaround Point
- ★ Morgan Museums Guided Tour
- 6 Donald Flat Lagoon
- ★ Swan Reach Museum Tour
- 7 Sunnydale
- ★ Ngaut Ngaut
- ★ Younghusband



Optional Onshore Tours

A range of onshore tours are available to all cruise passengers, depending on which cruise you decide to do. Whilst most of them can be booked once onboard your cruise, we strongly recommend that both the Monarto Zoo and Barossa tours are booked prior to departure to avoid disappointment.

Optional Onshore Tours (additional cost)



Monarto Zoo Wildlife Tour – \$62pp (pre-bookings recommended)

Enjoy a guided coach tour of one of the largest open-range zoos in the world, spanning more than 1,500 acres and home to more than 50 species of exotic and native mammals, birds and reptiles.



Barossa Wine & Heritage Tour – \$165pp (pre-bookings recommended)

Travel into the famous Barossa. Enjoy wine tasting and morning tea at Jacob's Creek Visitor Centre, Maggie Beer's Farm Shop with a cooking demonstration and lunch at Lambert Estate.



Nocturnal Tour at Sunnydale – \$16pp (onboard bookings only)

Go spotlighting through the remnants of the old Sunnydale station. A unique, Australian wildlife experience, in purpose-built carts, where you may see kangaroos, wombats, foxes, bats and owls.



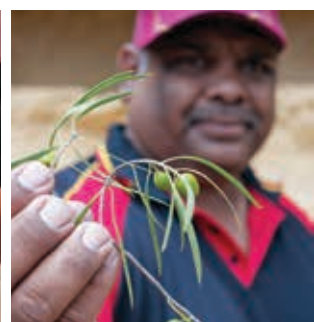
Bush Tucker Breakfast – \$35pp (onboard bookings only)

Enjoy a traditional breakfast on the shores of the river. From kangaroo sausages and scrambled eggs to wattleseed pancakes and billy tea, the early morning sounds of the river will be a great way to start the day.



Swan Reach Museum – Gold Coin Donation (payable on entry)

Housed in the original school building that was built in 1917, the Museum's collection consists of documents, photographs and historical items relating to the history of education and social history of the area.



Special Event Cruises and Group Charters

Our Special Event Cruise itineraries are select cruises with various themes or occasions. They may have a different itinerary to our regular departures, or we may have added some bonus experiences to enhance our normal cruises. Departures of our Special Event Cruises for 2019/20 include:

Special Events	Departure Date	Duration
Easter Cruise	19 April 2019	3 Nights
ANZAC Cruise	22 April 2019	4 Nights
Christmas in July	5, 12, 19, 26 July 2019	3 Nights
	8, 15, 22 July 2019	4 Nights
	5, 8, 12, 15, 19, 22, 26* July 2019	7 Nights
'Hot August Night' Music Cruise [^]	23 August 2019	3 Nights
Christmas Cruise [^]	20 December 2019	7 Nights
Mannum to Renmark	27 December 2019	7 Nights
New Year's Eve Cruise	31 January 2020	7 Nights
Renmark to Mannum Cruise		

[^]Surcharge applies

*Departure on 26 July includes a 3 night Christmas in July Cruise plus a 4 night standard cruise

For further details on special event cruises refer to www.murrayprincess.com.au/event-cruises.

Groups and Charters

We can assist with bookings for any group, including Probus Groups and Lifestyle Villages. You may like to travel as a small group (minimum numbers required), or charter the entire boat and choose your own course, or select from our popular charter itineraries. For more details, please visit www.murrayprincess.com.au



Pre or Post Cruise Accommodation and Touring

South Australia is home to award-winning events, festivals and wine regions (the Barossa and McLaren Vale), rugged outback wilderness, an extensive coastline, a famous offshore island (Kangaroo Island) and a large, meandering river (the Murray River). If you wish to extend your stay in South Australia, we can assist you with accommodation and touring, with a couple of suggestions listed below.

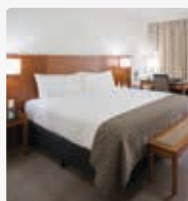
Pre or Post Cruise Accommodation



Majestic Roof Garden Hotel

The award-winning 4.5-star Majestic Roof Garden Hotel is only a 2 minute walk from the bars, restaurants and shopping of Rundle Street and guests have access to the rooftop garden with panoramic views of the Adelaide Hills and East End.

- R/C Air-conditioning • Foxtel
- On-demand movies • Free Wi-Fi
- Bar Facilities • Restaurant
- Mini Gymnasium • Guest Laundry
- Car Parking (fees apply)
- 24 hour rooms service and reception
- Luggage Storage



Stamford Plaza Adelaide

Situated in the heart of the city on Adelaide's key cultural boulevard, North Terrace, Stamford Plaza Adelaide offers 334 elegantly furnished, spacious guest rooms and suites, with views of the Adelaide parklands, Adelaide Oval or city.

- R/C Air-conditioning • Foxtel
- Bar Facilities • Car Parking (fees apply)
- Disabled Facilities • Gymnasium
- Free Wi-Fi in public areas
- 24 hour Room Service and Reception
- Cocktail Lounge • 3 Restaurants
- Outdoor Rooftop Heated Pool and Spa



Pre or Post Cruise Touring



Adelaide City Highlights – \$68pp

Adelaide is a cosmopolitan city offering a wealth of experiences including great food and wine, arts and culture, and world-class sporting events. See the best of Adelaide and learn about its history on a friendly and relaxed tour.



Barossa Food and Wine Experience – \$155pp

Travel in a small group and enjoy a food and wine journey to South Australia's premium wine region, the Barossa. Take time to sample some of the Barossa's finest wines and gourmet food.



Victor Harbor and McLaren Vale Highlights – \$144pp

Adelaide's Southern Vales and beaches. Visit Strathalbyn, Goolwa, with free time in Victor Harbor, before returning to Adelaide via the popular wine region, McLaren Vale. Includes a 3-course lunch.



Kangaroo Island Experience – \$304pp

A popular tour for visitors who may only have one day for touring, this tour will ensure that you experience many of the main highlights of Kangaroo Island, including Seal Bay, Remarkable Rocks and Admirals Arch with 2-course lunch.



Seal Bay Discovery – \$322pp

Kangaroo Island is renowned for its wildlife and on this tour, you will discover some of the most popular wildlife attractions on Kangaroo Island, including Seal Bay, Raptor Domain and Kangaroo Island Wildlife Park.



Adelaide, Kangaroo Island and Murray River Packages

BOOK A PACKAGE & SAVE!

Fly, rail or drive into Adelaide and enjoy a stay in this delightful city for a few nights including a tour around the Adelaide CBD and the Adelaide Hills, before travelling to Kangaroo Island. Discover South Australia's premier nature-based tourism destination on a relaxed yet comprehensive two day tour. Finish your South Australian experience aboard the PS Murray Princess for a 3, 4 or 7 night cruise on the beautiful and historic Murray River.

Highlights

3 nights accommodation in Adelaide

Enjoy a full day Ultimate Adelaide and Hahndorf tour.

Highlights include:

- Haigh's Chocolates factory tour and tasting (except Sundays and SA Public Holidays)
- Adelaide's cultural boulevard of North Terrace, University, Library, Art Gallery and Museum
- See St Peter's Cathedral, Adelaide Oval and enjoy the view from Mt Lofty Summit
- Wander the main street of Hahndorf, exploring the many shops and businesses with German origin

Experience the fascinating wildlife, spectacular coastal scenery, stunning landscapes and the unique local produce of Kangaroo Island on a 2 day tour

Overnight accommodation on Kangaroo Island including breakfast and lunch on both days

Choose between a 3, 4 or 7 night cruise aboard the PS Murray Princess (see pages 8-11 for full details)

Prices Per Person

Prices Per Person	Departs	Twin Share	Single
8 Days / 7 Nts (ADL3KIMR3)	Mon	\$1833 ^{.50}	\$2540 ^{.50}
9 Days / 8 Nts (ADL3KIMR4)	Thu	\$2167 ^{.50}	\$2995 ^{.50}
12 Days / 11 Nts (ADL3KIMR7)	Mon / Thu	\$2788 ^{.50}	\$3827 ^{.50}

Prices are per person based on a twin share and single room basis including an Inside Cabin with 2 single beds on the PS Murray Princess, a Superior Room at the Majestic Roof Garden Hotel and the 2 Day Best of Kangaroo Island tour staying at the Ozone Hotel in an Executive Room. The 2 Day Best of Kangaroo Island tour is not available in this package from May to September and is replaced with the 2 Day Food, Wine and Natural Wonders of Kangaroo Island tour – prices on application. Please refer to www.murrayprincess.com.au for package departure dates and further details.



Terms and Conditions

General

All costs, itinerary details, cruise dates, package inclusions and accommodation information are correct at the time of publishing; however these can be subject to alteration, sometimes without notice. All services and reservations provided are subject to the conditions of the principal providers and no responsibility is accepted by Captain Cook Cruises (SeaLink Travel Group) for misrepresentation, unforeseen omissions or additional costs incurred, including those arising from adverse weather conditions or any situations beyond the control of Captain Cook Cruises (SeaLink Travel Group). Refunds may not be available for unused services. All cruises and packages featuring the Murray Princess are subject to the terms and conditions of the Passenger Cruise Contract, which is provided when booking any Murray Princess cruise or package. Travel insurance is highly recommended. The Murray Princess goes in for maintenance twice a year – cruises will not operate between 21 June to 4 July 2019, 27 September to 3 October 2019, and 4 January to 30 January 2020.

Pricing

All fares and prices are in Australian Dollars and valid from 1 April 2019 to 31 March 2020. Prices exclude onboard charges such as optional tours, services and drinks. All fares and prices are subject to availability, surcharges, blackout periods, minimum night stays and seasonal variations. Always check your travel documentation for final prices.

Early Booking Saver (EBS) Fares

EBS fares must be booked more than 60 days in advance in order to receive the discount, and are subject to availability at the time of booking. A select number of cabins have been set aside for this special fare. Once these cabins have been sold, prices revert to Standard Fares. Travel in June, July, August, January or February and the EBS saving will be 15% of your cruise fare. Or save 10% off your cruise fare if you travel in April, May, September, October, November, December or March.

Child Policy

Twin share pricing applies to all children 4 years and above. Children under 3 years of age travel free of charge provided they use existing bedding, however children under 3 years are not recommended on Murray Princess Cruises.

Room Configurations

Twin share prices are based on a 'twin' cabin consisting of two single beds. A surcharge of \$60 per room per night applies to all Inside Cabins and Outside Cabins with a double bed. These cabins are limited and subject to availability. No surcharge applies for Staterooms. Extra person prices are based on three people sharing one room with existing bedding (eg double/queen and a single bed). Outside Cabins and Staterooms can accommodate an extra person based on 1 double bed and 1 single bed, but availability is limited. Outside Cabin Extra Person prices are available on enquiry.

Booking and Final Payment

To make a booking, a deposit of AU\$200 per person is required within 48 hours of booking. The passenger cruise contract and special diet request form must be returned within 48 hours of booking confirmation or together with your deposit. Final payment is required 60 days prior to travel. If booking is made within 60 days of travel, full payment must be made at time of booking. For all bookings made online, full payment must be made at time of booking.

Credit Card Fees

All payments made by credit card will incur a surcharge. Please refer to www.murrayprincess.com.au/terms-and-conditions for details. SURCHARGE FREE payment options include Masterpass, PayPal, POLi Pay, Direct Deposit, EFTPOS (Savings or Cheque) and Cash.

Travel Insurance

Holiday plans can be disrupted and cancellation fees can be costly. Travel insurance is inexpensive and highly recommended, and is available when you book your cruise online. Please note that Travel

Insurance may not cover disruptions caused by mechanical breakdowns or adverse weather conditions so please check your insurance policy.

Cancellation Fees

For Murray Princess Cruises including any South Australia packages featuring Murray Princess (operated by Captain Cook Cruises), the cancellation of a booking or part thereof will incur the following fees:

- More than 60 days before departure – \$50 per person
- Between 30 and 60 days before departure – Loss of deposit
- Between 15 and 30 days before departure – 50% of total cost
- Less than 14 days before departure – 100% of total cost

Cancellation fees up to 50% of the cruise fare less an administration fee of \$50 per person, may be applied to another cruise if completed within 12 months of the original booking. Special payment and cancellation conditions apply for groups of 15 or more and Special Event Cruises, which are available on application.

No refunds will be made for services not availed once travel has commenced. All refund claims must be made in writing. Please note operators (other than SeaLink Travel Group) reserve the right to charge cancellation fees in addition to the above.

Amendment Fees

Due to the complexity, staff time and communication costs of the booking process, a charge of AU\$22 (incl GST) may apply to each modification made after the original booking. Please note that online bookings cannot be modified online and must be made through our Sales Centre by calling 1300 729 938 (within Australia) or +61 8 8202 8698 (from outside Australia) or by emailing murrayprincess@sealink.com.au.

Conditions of Travel and Booking

In these conditions "the Company" means Captain Cook Cruises (SeaLink Travel Group), its servants and agents and "the passenger" means the passenger booked to travel. Travel

must be completed within 12 months of payment. These conditions shall be governed by and construed in accordance with the laws of the Commonwealth of Australia and any Australian State. The Company reserves the right to cancel, vary this service in any way, or substitute any ferry or other means of transport without incurring any liability.

Fares, times, schedules and routes are subject to alteration, without prior notice, at the discretion of the Company. The Company shall not be liable for any loss or damage which may arise in the event of cancellation of this service or the abandonment of the service during the course thereof (should the Company or any of its servants or agents decide that such abandonment is necessary) or of any deviation or delay in any service arising from any cause whatsoever. In any such event the Company will not be liable in any way for consequential damage including, but not limited to, the cost of accommodation or for any alternative means of travel which may arise and any additional expense so arising shall be the liability of the passenger.

The Company accepts no responsibility for loss of, or damage to, any vehicle being carried for the passenger, or luggage, or for consequential damages arising therefrom whether sustained during off-loading or transportation, and whether arising from negligence, malfunction of the vessel or other cause, except to the extent that the exclusion of such liability is prohibited by law. The Company accepts no responsibility for any injury and/or death of a passenger travelling on this service whether caused by negligence, malfunction to the vessel or other cause except to the extent that exclusion of such liability is prohibited by law.

Refer to www.murrayprincess.com.au for full terms and conditions.



For Bookings:

Call 1300 729 938 or visit murrayprincess.com.au

Find us on 

facebook.com/PSMurrayPrincess

Adelaide Office:

Level 3, 26 Flinders Street
Adelaide, SA 5000

Mannum Office:

96 Randell Street
Mannum, SA 5238

Your Travel Agent

Agent Bookings: Phone 1300 729 938